

Tateyama - Sanroku Ski & Snowboard School (GOKURAKUZAKA Area)



We offer private lessons for English speaking guests. By tailoring a lesson to individuals, we ensure the best quality lesson especially for beginners, from young children to seniors.

Let's enjoy your first ski experience safely with us !



Lesson Time : AM 10:00 - 12:00 2 hours
PM 13:00 - 15:00 2 hours
1DAY AM + PM 4 hours

PRICE : PRIVATE LESSON

2-hours lesson (AM or PM) 12,000 yen / 1 instructor *

4-hours lesson (AM and PM) 17,000 yen / 1 instructor *

*The lesson might be compromised due to the number of people.

We recommend PRIVATE LESSON (1or 2 person per group) to learn ski safely and quickly. One-to-one lesson is recommended for a small child.

* More than 3 person per group, GROUP LESSON PRICE is applied. (2-hours 18,000 yen / group, 4-hours 23,000 yen / group)

HOW TO BOOK:

To book a lesson, please visit our Facebook and send message by chat /messenger.

 [立山山麓スキー学校 | Facebook](#)

<https://www.facebook.com/tateyama36ski/>

Please include below information. We will check availability and reply you.

1.Name 2.Country 3.Lesson Date 4.Course (AM/PM/1-DAY)

5.Number of people Adult : ()person Child: ()person (age:)

6.Ski experience (first time or not)

About Tateyama Mountain Ski Resort

English [Visit TOYAMA](#)

Japanese <http://www.tateyama36.co.jp/>

Tateyama Mountain Ski Resort



★Tateyama Sanroku Ski & Snowboard School
立山山麓スキースクール




ACCESS

Dentetsu Toyama Station



About 60 min
By TOYAMA CHIHOU RAILWAYS
¥1,230

→

Tateyama Station

Bus icon

About 20 min
By SKI BUS
¥300

→

Gokurakuzaka Ski Resort

Walking icon

Soon

See more info → [TOYAMA CHIHOU TETSUDOU INC.](#)
[SKI BUS Timetable \(2024-2025\)](#)



SKI CENTER



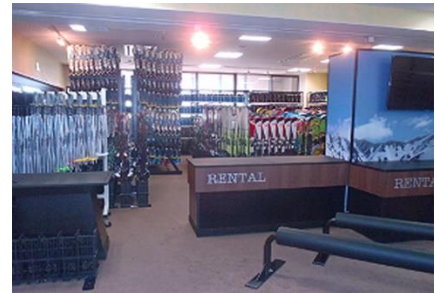
SKI SCHOOL

FLOW OF THE DAY


1. Go to Rental Shop

If you use rental ski service, visit the Rental Shop in the SKI CENTER.

You can rent Ski, Ski Poles, Ski Boots, Ski Wear, and Helmet. The other goods (ski goggle, globes...) are available at the Goods Shop.



See more info → <https://tateyama36.co.jp/price/>

 レンタル料金




* It may take time during busy hours (especially weekend), so earlier visit is recommended.

2. Get the Lift ticket

You can get the lift ticket (One-Day ¥4,600 or Half-Day ¥3,600) at the SKI CENTER.

See more info → <https://tateyama36.co.jp/price/>

 基本チケット料金

If you like, you can PAY LATER in case using “One ride tickets” prepared by SKI SCHOOL during the lesson.

3. Ready to Go !

Could you please come to SKI SCHOOL 5 minutes prior to the lesson ?
Thank you !

ABOUT PAYMENT

- We kindly request payment in advance.
- We only take cash payments.

CASH ONLY 